



**FT RANDALL FEDERAL CREDIT UNION**

# Member Newsletter

*Proudly serving Charles Mix County for 65 Years.*

**FALL 2016**

**[www.ftrandallfcu.com](http://www.ftrandallfcu.com)**

**Number 131**



## Office Hours:

### Monday - Friday

Lobby: 8:30 am to 5:00 pm  
Drive-Up: 8:30 am to 5:00 pm

## Holiday Hours:

We will be **closed** in  
observance of these holidays:

**Oct. 10** Columbus/ Native

American Day

**Nov. 11** Veterans Day

**Nov. 24** Thanksgiving

**Dec. 26** Day after  
Christmas

## ATM:

**24 hour**

**Drive-up convenience**

## Offices:

PO Box 110—218 White Swan Dr  
**Pickstown, SD 57367**  
1-888-244-9009 or 605-487-7641

PO Box 927—100 W 7th Ave  
**Platte, SD 57369**  
605-337-9502

PO Box 297—518 E HWY 46  
**Wagner, SD 57380**  
605-384-5332



# MEMBERSHIP EXPANSION

We are excited to announce our field of membership has expanded! Ft Randall Federal Credit Union is now able to offer membership to anyone who lives, works, worships, volunteers, or attends school in the following counties: Brule, Bon Homme, Charles Mix, Douglas, Gregory, or Hutchinson County and their immediate family. Immediate family members of current members would include: Spouse, Children, Parents, Siblings or Grandparents.

Ft Randall Credit Union and its Employees are here to help you with all your financial needs, from savings accounts to loans, big or small we offer it all. Stop in or call today!



## Thomson named South Dakota Credit Union Professional of the Year

Our CEO, Julie Thomson, was recently recognized as the SD Credit Union Professional of the Year for 2015.

### Pictured:

President Julie Thomson  
President of Board Darrell Pepper

*Our Mission: To provide membership competitive financial and related services in a professional and friendly atmosphere, while pursuing growth and a positive community image.*

# FALL INTO GREAT RATES

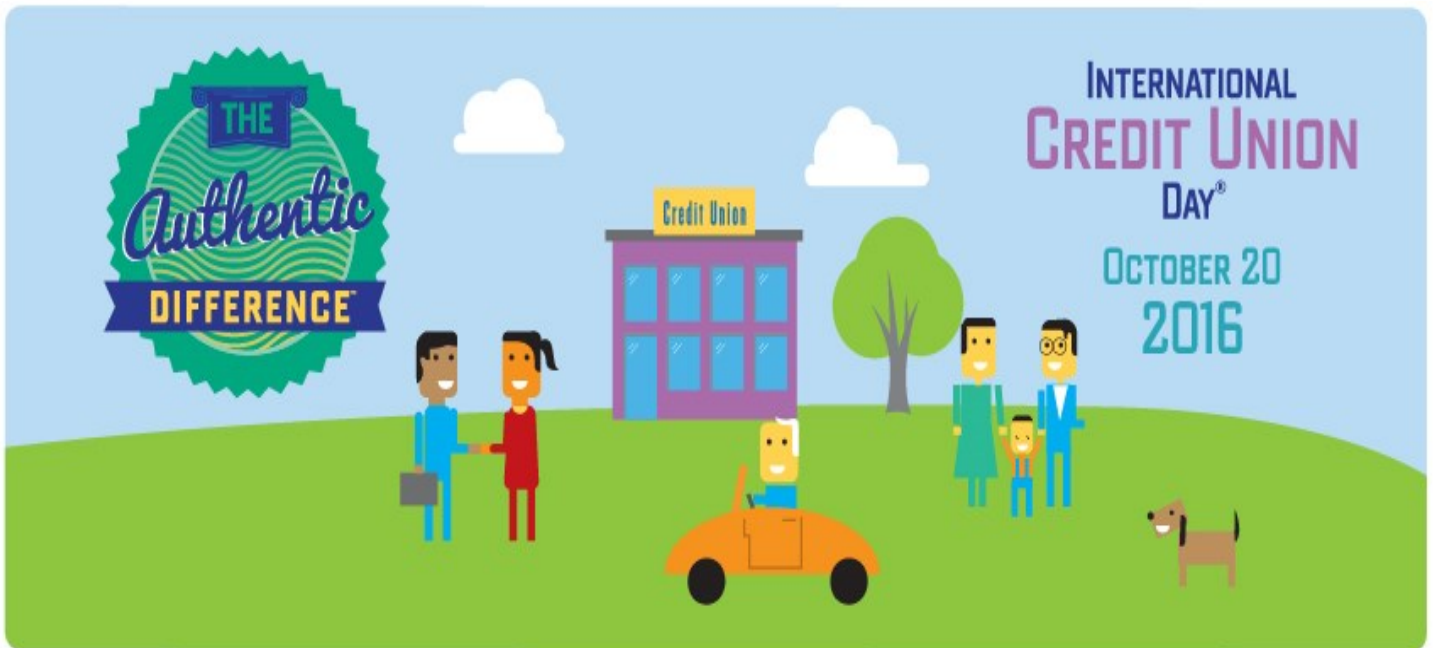
**Refinance your vehicle loan with  
Ft Randall Federal Credit Union**  
*for a lower interest rate or smaller monthly payment.*

- Making it Convenient
- No Monthly Payment Hassle
- Waiving All Loan Origination Fees

*\*Available on new & used cars, trucks, motorcycles, ATV's, and boats\**



INTERNATIONAL  
**CREDIT UNION**  
Day®  
OCTOBER 20  
2016



Join us Thursday October 20th  
for popcorn & refreshments all day long!  
**#CreditUnionDifference**

***Are you signed up for Bill Pay? E-Statements? Virtual Branch? My-Money? CU Finance? Call Today!!!!***





**FORT RANDALL**  
**FEDERAL**  
**CREDIT UNION**

*Lend a Hand  
Give a Can.*

# FOOD DRIVE

to benefit our community

Canned Goods & Non-Perishable Items  
will be accepted from **October 15th - December 31st**

Donations can be dropped off at any of our Ft Randall Federal Credit Union Locations.

**Pickstown** - 218 White Swan Drive  
**Platte** - 100 W. 7th Street  
**Wagner** - 518 E. Hwy 46

\* \* \* \* \*

*All and any donations are appreciated. Items will be distributed between the 3 communities local food pantries, throughout the Holiday Season.*

**Charles Mix County Food Pantry – Lake Andes, SD**  
**Helping Hands Food Pantry – Platte, SD**  
**Wagner Food Pantry – Wagner, SD**

*"People Helping People, Since 1951"*

# **Ft Randall Federal Credit Union**

## **65th Annual Meeting**

FRFCU will be holding its 65th Annual Meeting and Meal, January 26, 2017, at the Pizza Ranch in Platte. Buffet meal will be served from 5:30-7:30pm. With official business to start at 6:30pm. Come enjoy a meal on us and visit with the employees about all the new services the credit union is offering. Employees will have new services booths set up from 5:30-6:30pm. Join us for a night out!!

Please RSVP by January 16th

**So many GREAT Door Prizes to be given away.**

- Apple Watch
- iPad Mini
- Fit Bit
- & much more!!



## **Now offering - Ag Lending**



**Caleb Clements**  
Business/ Ag Loan Officer  
605-384-5332

**REAP THE REWARDS  
of a Low-Rate Loan!**